



# MARTIN DE SAINT MUERELL

Lives and works in Hundsheim, Austria

<http://www.martin-mueller.cc/>

Art and creativity has accompanied me during my whole life. It was lucky that I could grow up in an Art minded family and later in a wonderful commune. Some of my ancestors were painters and sculptors (e.g. Meinrad Guggenbichler, my parents had extraordinary artistic abilities.

I see myself in the European tradition of Shamans and Druids, who were at the same time Artists, Teachers and Healers for the population. Consequently, in the following tradition of Sigmund Freud, Gustav Klimt and Egon Schiele, who could and had to take their responsibilities in the most erotic society in the world – namely in and around Vienna. They showed the only healing and meaningful way of life, namely in the direction of consciously experiencing love and sexuality.

The idea for my erotic works came independently, and also from female artist colleagues. I would not have had the idea otherwise.

While selling posters of my erotic drawings, I initially thought that the male population will buy them. That was a mistake. Women bought them. I asked them why

and they said: "Because these drawings are the most beautiful depictions of women I have ever seen!" I carried on asking: "What are you going to do with these erotic drawings?" they said: "I will place them in my bedroom!". Recently a visitor at one of my exhibitions said that my erotic drawings actually are altarpieces. At first I thought: "Why this opinion?" But when you look at these erotic drawings, he certainly is right! Altarpieces from the second, suppressed half of heaven. Apparently, the brave female buyers of my erotic posters equally are longing for this half of heaven.

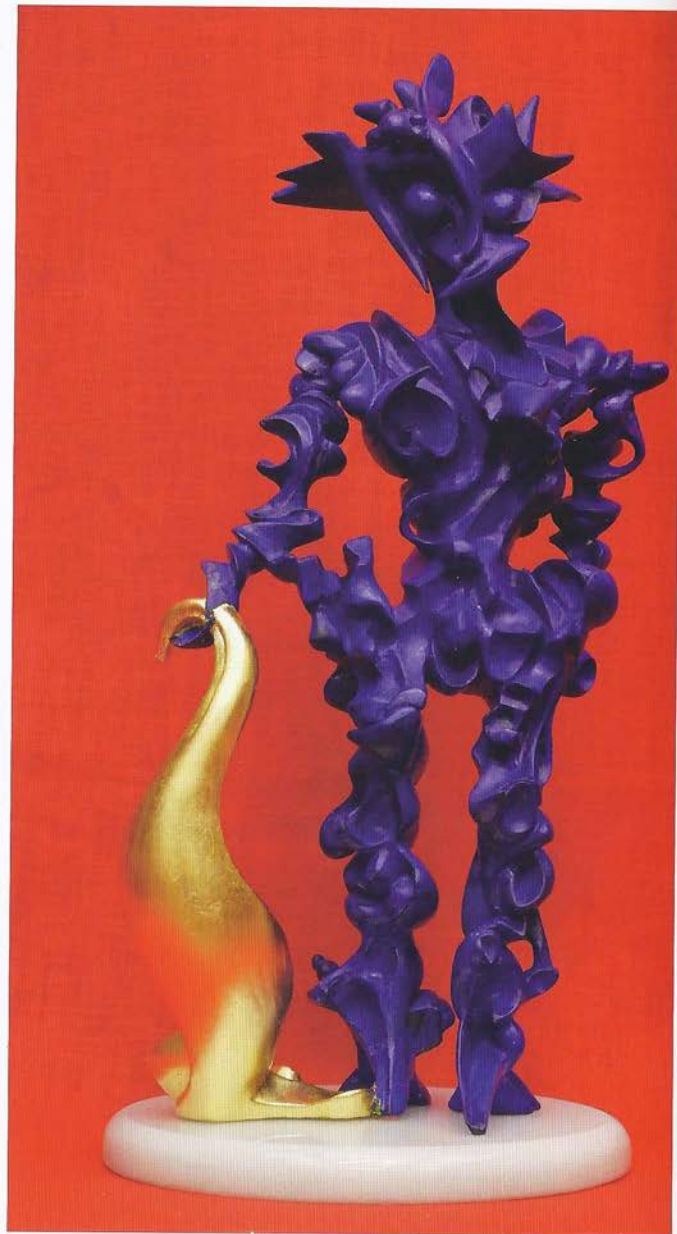
In my shapes, I try to reach a maximum of harmony and freedom. Frankly, the shapes often take a run in the deep center to finally reach unconceived heights and distances (e.g. it can clearly be seen in the sculpture "Hand C3" as well as in the completely free-flowing long hair usually depicted in my erotic compositions of women.

In all of my work you find certain dynamics, also a characteristic factor of my youth; the population was intensively occupied with rebuilding the destroyed country, to make it aesthetic and interesting again.

Martin de Saint Muerell 14.12.2018



↑ GLOBE ART INNOVATION 1B, 1999 / 2000 BRONZE CASTING, PATINA COLOR 8.2X9.4X12.4 IN. | 21X24X31,5 CM.



326 ↑ ELAPHE GUTTATA, STARTED 2002, ARTIFICIAL STONE, FILLER (MODEL FOR BRONZE CASTING) 10.6X10.6X25.1 IN. | 27X27X64 CM.  
 ↑ MARTHA'S WEINGARTEN, 1999/2005/2017 BRONZE CASTING, PATINA COLOR, GOLD LEAF 24 CARAT, CARRERA MARBLE 4.7X7.8X15.3 IN. | 12X20X39 CM.



↑ ENGEL, 1998/1999/2004 BRONZE CASTING, SILVER LEAF 9.8X13.3X17.3 IN. | 25X34X44 CM.



ARTIST

328 ↑ KOKON, 1992/1997/2013 BRONZE CASTING AND PATINA COLOR 8.2X9.8X10.2 IN. | 21X25X26 CM.

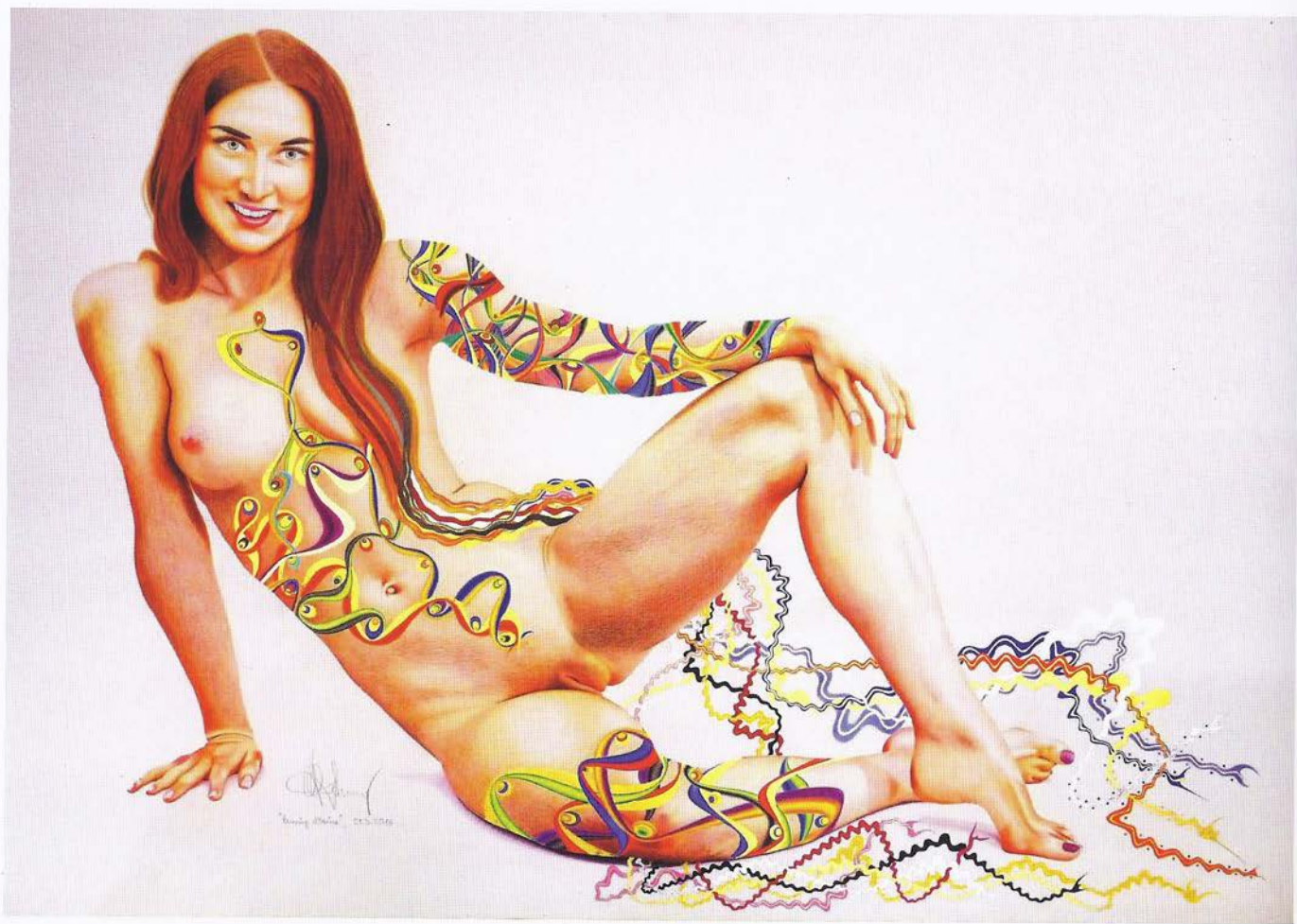


↑ EXOCET 1, 1991/1992 BRONZE CASTING, POLISHED, GALVANIZED GOLD COATING 6.6X8.2X10.2 IN. | 17X21X26 CM.

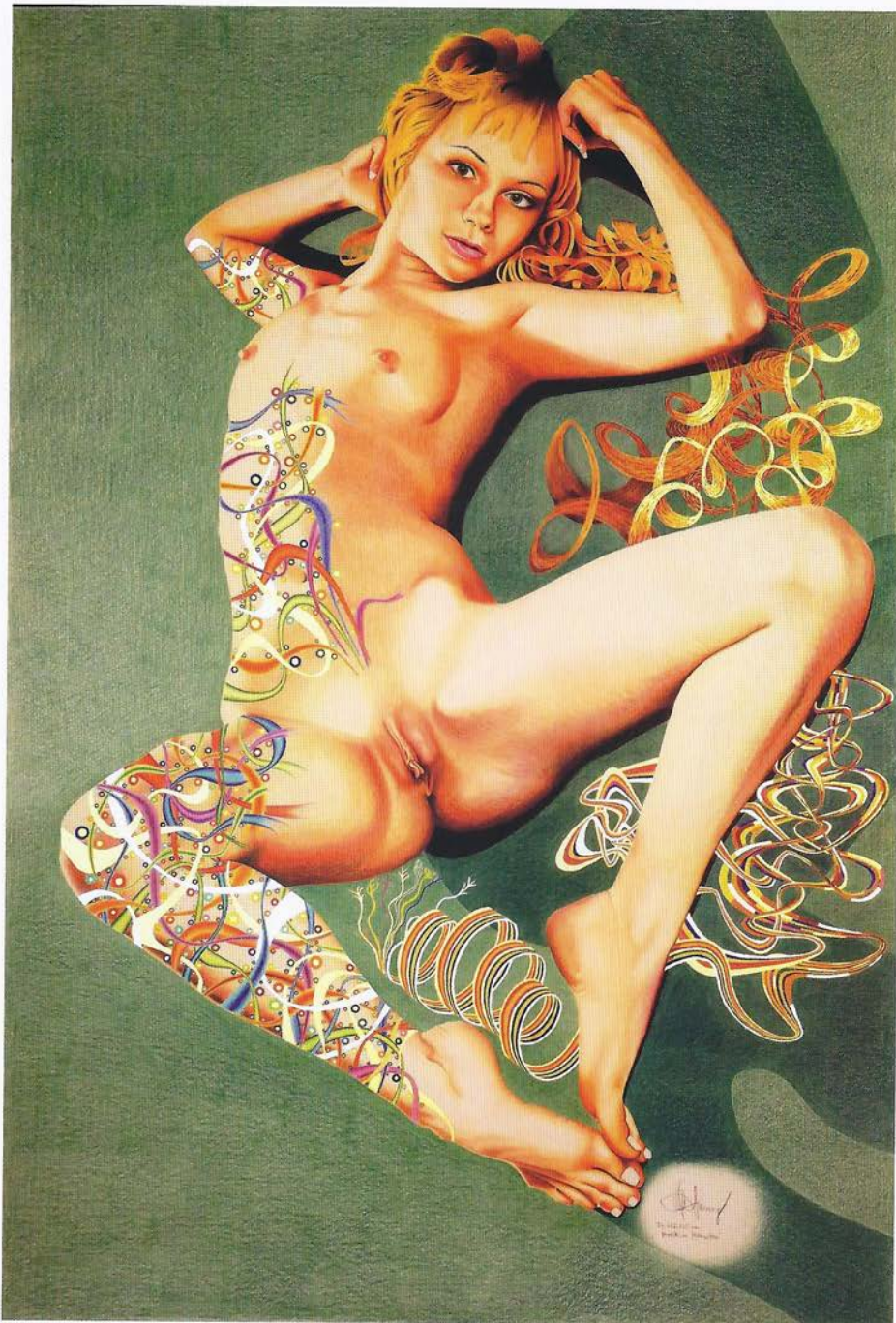








ARTIST



↑ DIE SCHÖNHEIT VON GESPALTENEN HAARSPITZEN, 2016-2018 PASTEL CRAYON, GOLD LEAF 24 CARAT, ALUMINUM 32.4X47.4 IN. | 82,5X120,5 CM.

ARTIST



334 ↑ HAND C3, 1992/1996-1997/2014 BRONZE CASTING, PATINA COLOR 9X11.4X11.8 IN. | 23X29X30 CM.



↑ HARMONIE 1, 1984/2006 BRONZE CASTING, PATINA COLOR 11X11X13.7 IN. | 28X28X35 CM.